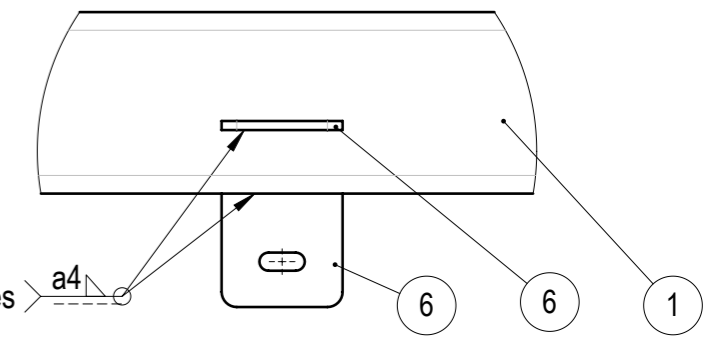
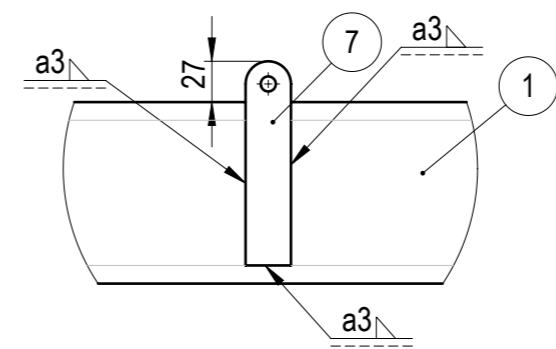
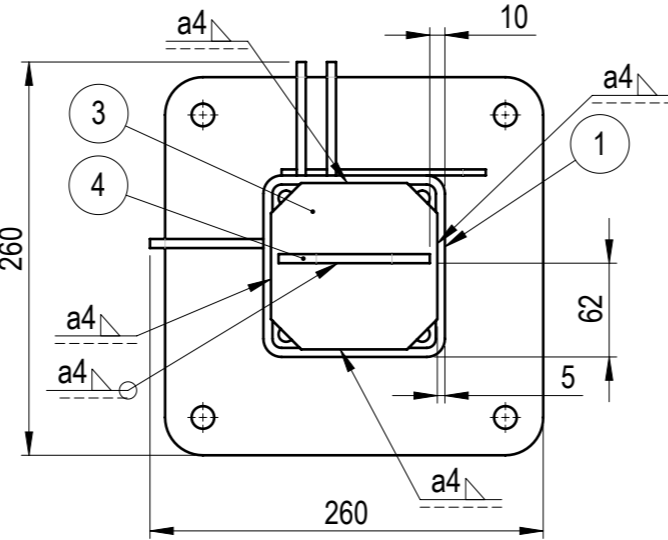
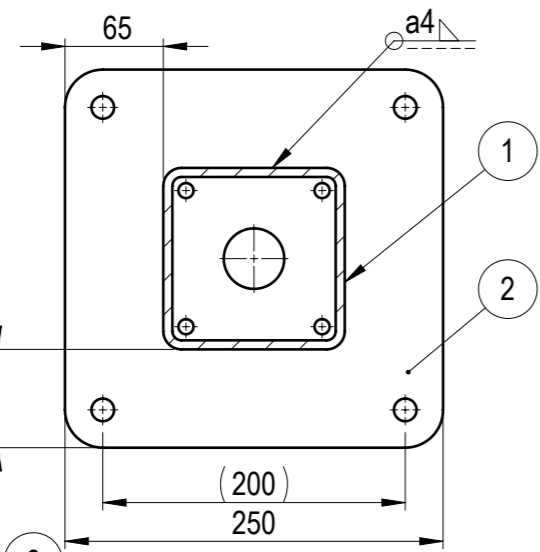


A-A
SCALE: 1 : 5

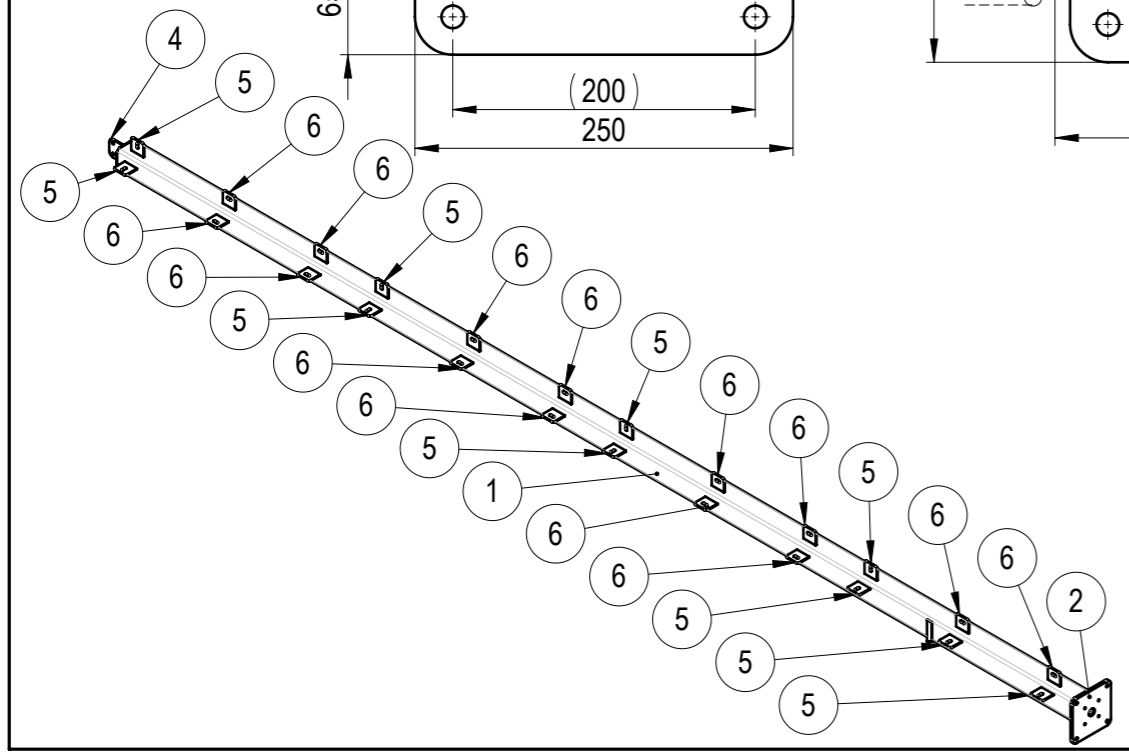
B
SCALE: 1 : 5

C
SCALE: 1 : 5

D
SCALE: 1 : 5



Same weldment for all pos.5 and pos. 6 plates



| NO. | PART NO | DESCRIPTION | MATERIAL | PROCESSING | REVISION | WEIGHT | QTY |
|-----|--------------|----------------|----------|------------|----------|--------|-----|
| 1 | 105-60301-01 | Column tube | S355J2 | CND | | 129.99 | 1 |
| 2 | 105-60301-02 | Base plate | S355J2 | LC | | 6.98 | 1 |
| 3 | 105-60301-03 | End cap | S355J2 | LC | | 0.88 | 1 |
| 4 | 105-60301-04 | Top bracket | S355J2 | LC | | 0.42 | 1 |
| 5 | 105-60301-05 | Side bracket 1 | S355J2 | LC | | 0.26 | 10 |
| 6 | 105-60301-06 | Side bracket 2 | S355J2 | LC | | 0.26 | 14 |
| 7 | 105-60301-07 | Padlock plate | S355 | LC | | 0.12 | 1 |

| | | | | | | | |
|--------------------------------------|--------------------|-----------|------------------------------------------------------|---------|----------|---------------------|--|
| WEMPS ENGINEERING SERVICES | MATERIAL | WEIGHT | DEBURR AND BREAK SHARP EDGES DO NOT SCALE DRAWING | | REVISION | DATE | |
| | SURFACE PROTECTION | MACHINING | THERMAL CUTTING | WELDING | SCALE | FORMAT | |
| Designed by | NAME | SIGNATURE | PART NO. | | | 105-60301-00 | |
| Drawn by | | | DESCRIPTION | | | | |
| Technical ref. | | | Rear column 1 | | | | |
| | | | | | | SHEET 1/1 | |